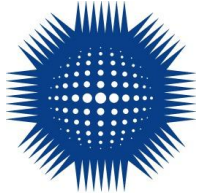




كاريزما للتنمية القوى العاملة
Charisma Workforce Development

Your best partners in work and life



nebosh

LEARNING
PARTNER

GOLD 1382

NEBOSH International General Certificate IG Course Guideline

CONTACT US :



Building No.61 Block No.50 Ebied Khatem Street Arkweet
,Khartoum Sudan



www.charismawd.com



info@charismawd.com



+2499 923699005 - +249923699003 - +96891915604

Pakistan

+92 331 7600 126 | +92 335 7600 126

saad.ur.rehman@charismawd.com

Office No #308, 3rd floor, Talha Heights, 6th Rd, 21-D, Satellite Town,
Rawalpindi, Pakistan

Your best partners in work and life



NEBOSH International General Certificate Pre Course Guideline

1

Before You Start

2

Why Take The NEBOSH IG Certificate?

3

Course Overview

4

Course Syllabus

5

Assessment

6

Pre-Course Guidance & Advices



nebosh

LEARNING
PARTNER

GOLD 1382



كاريزما للتنمية القوى العاملة
Charisma Workforce Development

Before you start

Join a community of over 170,000 individuals who have already achieved the prestigious NEBOSH International General Certificate in Occupational Health and Safety. Now is the perfect time to be a part of this growing network

The NEBOSH International General Certificate is specifically designed to meet the evolving needs of employers, equipping learners with the knowledge and skills to create a safer workplace.

Relevant to every industry, this certification is ideal for managers, supervisors, and anyone with health and safety management responsibilities. It is also a valuable starting point for those pursuing a career in health and safety, offering a solid foundation for success.

Trusted by renowned organizations like Maersk, Shell, BP, Skanska, Nestle, and the Dubai World Trade Centre, the NEBOSH International General Certificate can contribute to:

- Reducing workplace injuries and illnesses.
- Enhancing employee well-being.
- Demonstrating your firm commitment to health and safety, which can be a competitive advantage in winning business.
- Elevate your professional profile and make a positive impact on your workplace with the NEBOSH International General Certificate. Enroll today and unlock a world of opportunities

For further information please kindly visit NEBOSH website by [click here](#)

Before you start - NEBOSH IG Facts

Entry requirements

There are no entry requirements for this qualification, however it is important that learners have a suitable standard of English language in order to understand and articulate the concepts contained in the syllabus.

NEBOSH recommends that learners undertaking this qualification should reach a minimum standard of English equivalent to an International English Language Testing System (IELTS) score of 6.0 or higher in IELTS tests.

English Language Requirements

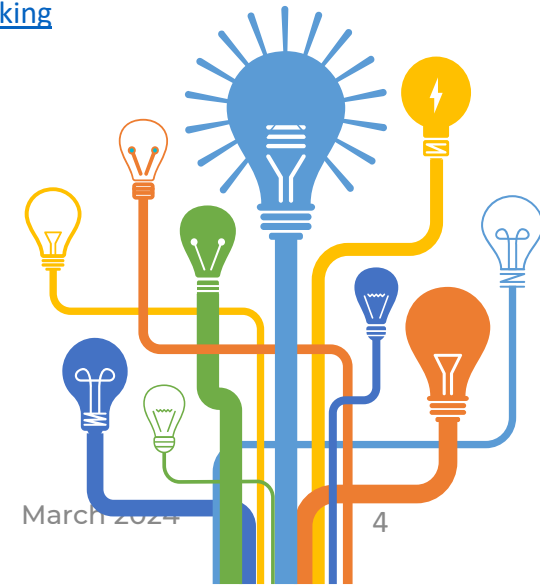
Charisma is accredited to deliver the NEBOSH International General Certificate by NEBOSH , which can be studied and examined in English only. NEBOSH recommends that non-native speakers undertaking this qualification should have a minimum standard of English. If you have any further questions or need additional information, please feel free to ask , +249923699003 - +96891915604

Study Time

The International General Certificate (NEBOSH IG) involves a minimum of 65 taught hours and approximately 40 hours of private study and background reading. For further information, kindly visit the NEBOSH website by [clicking here](#) , It is possible for fast track learners to complete the qualification in 10 working days.

Study Methods

At Charisma, we are proud to be accredited by NEBOSH to offer the International Certificate in multiple ways. Part Time & Evening, - Full Time Block Release, - External Students - Virtual Delivery
We understand that everyone has different preferences, so you have the flexibility to choose the method that suits you best. If you would like to learn more about the options available, please don't hesitate to reach out to our learning advisors. +249923699003 +96891915604 They will be happy to provide you with further information and guidance."



Why Take the NEBOSH IG Certificate with Charisma? Unlock Your Potential!

Are you ready to take your career in occupational health and safety to new heights? Discover why choosing the NEBOSH IG Certificate with Charisma is the perfect combination for your professional success:

- Charisma brings years of experience and expertise in delivering high-quality training programs. Our instructors are industry professionals who possess in-depth knowledge of occupational health and safety practices. With Charisma, you can be confident that you are learning from the best in the field.
- We believe learning should be engaging, interactive, and inspiring. Charisma's NEBOSH IG Certificate program offers a dynamic and immersive learning experience, combining theoretical knowledge with practical applications through real-world case studies and interactive exercises.
- The NEBOSH IG Certificate curriculum covers all the essential topics you need to excel in health and safety. From hazard identification to risk assessment, legislation to control measures.
- We understand that every learner is unique, and we are committed to providing personalized support throughout your NEBOSH IG journey. Our trainers are dedicated to your success, offering guidance, clarifying doubts, and ensuring you have the resources and assistance you need to excel in your studies and examinations.
- When you choose to pursue the NEBOSH IG Certificate with Charisma, you join a vibrant community of like-minded professionals. Connect and network with fellow learners, industry experts, and potential employers, expanding your professional circle and opening doors to new opportunities.
- The NEBOSH IG Certificate is internationally recognized and respected by employers and regulatory bodies worldwide. Enhance your career prospects and gain credibility with a qualification that is valued across industries and geographies.
- The NEBOSH IG Certificate is a stepping-stone to career advancement in the health and safety field. It demonstrates your commitment to professional growth and positions you as a competent and knowledgeable practitioner. Open doors to higher-level qualifications and unlock exciting career opportunities with Charisma by your side.

Course level

The NEBOSH International General Certificate in Occupational Health and Safety has been accredited and credit rated by the Scottish Qualifications Authority (SQA) Accreditation. It sits in the Scottish Credit and Qualifications Framework (SCQF) at SCQF Level 6 with 11 SCQF credit points.

SCQF Level 6 (Equivalent to RQF Level 3) Unit IG1: 5 credits, Unit IG2: 6 credits

Holders of the NEBOSH International General Certificate are entitled to: Professional membership

Associate Membership (AIIRSM) of the International Institute of Risk and Safety Management (IIRSM).

For entry requirements for this qualification, For further information please kindly visit NEBOSH website by [click here](#)



Course structure

NEBOSH IG - Management of health and safety	Tuition Hours	Self-Study Hours	Assessment
IG1			
Element 1: Why we should manage workplace health and safety	6		
Element 2: How health and safety management systems work and what they look like	2		Online open book exam
Element 3: Managing risk – understanding people and processes	14	+20	
Element 4: Health and safety monitoring and measuring	7		
IG2			
Element 5: Physical and psychological health	7		
Element 6: Musculoskeletal health	6		Practical Risk assessment
Element 7: Chemical and biological agents	6		
Element 8: General workplace issues	10	+20	
Element 9: Work equipment	5		
Element 10: Fire	3		
Element 11: Electricity	2		

Learning outcomes

Upon completion of the NEBOSH IG course, learners should be able to:

- Understand the key principles of occupational health and safety and their importance in the workplace.
- Identify and evaluate workplace hazards, such as physical, chemical, biological, and psychological hazards
- Conduct risk assessments and determine appropriate control measures to mitigate identified risks.
- Understand the legal framework and regulatory requirements related to health and safety in the workplace.
- Implement effective health and safety management systems, including policies, procedures, and protocols.
- Develop and implement emergency response plans and procedures to handle workplace incidents and accidents
- Promote a positive safety culture within the organization, fostering employee engagement and commitment to health and safety.
- Understand the principles of ergonomics and apply them to optimize workplace design and prevent musculoskeletal disorders.
- Recognize the importance of effective communication and consultation in promoting health and safety awareness.
- Understand the roles and responsibilities of individuals and teams in managing health and safety in the workplace.
- Conduct investigations and analyze incidents to identify root causes and implement corrective actions.
- Monitor and measure health and safety performance using appropriate metrics and indicators.
- Understand the specific health and safety considerations in industries such as construction, manufacturing, and service sectors.
- Keep abreast of emerging trends, best practices, and legislative changes in the field of occupational health and safety.



NEBOSH IG 1 Syllabus

Element 1: Why we should manage workplace health and safety.

- 1.1 Morals and money
- 1.2 Regulating health and safety
- 1.3 Who does what in organisations

Element 2: How health and safety management systems work and what they look like

- 2.1 What they are and the benefits they bring
- 2.2 What good health and safety management systems look like

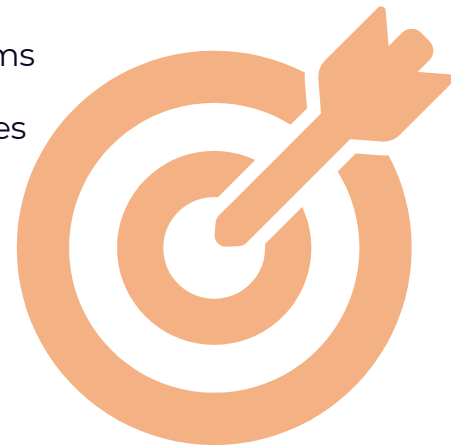
Element 4: Health and safety monitoring and measuring.

- 4.1 Active and reactive monitoring
- 4.2 Investigating incidents
- 4.3 Health and safety auditing
- 4.4 Review of health and safety performance

To download Syllabus Guide for Learners – from NEBOSH website [Click Here](#)

Element 3: Managing risk – understanding people and processes.

- 3.1 Health and safety culture
- 3.2 Improving health and safety culture
- 3.3 How human factors influence behavior
- 3.4 Assessing risk
- 3.5 Management of change
- 3.6 Safe systems of work
- 3.7 Permit-to-work systems
- 3.8 Emergency procedures



NEBOSH IG - IG 2 Course Syllabus

Element 5: Physical and psychological health.

- 5.1 Noise
- 5.2 Vibration
- 5.3 Radiation
- 5.4 Mental ill-health
- 5.5 Violence at work
- 5.6 Substance abuse at work

Element 6: Musculoskeletal health

- 6.1 Work-related upper limb disorders
- 6.2 Manual handling
- 6.3 Load-handling equipment

Element 7: Chemical and biological agents.

- 7.1 Hazardous substances
- 7.2 Assessment of health risks
- 7.4 Control measures
- 7.5 Specific agents

Element 8: General workplace issues.

- 8.1 Health, welfare and work environment
- 8.2 Working at height
- 8.3 Safe working in confined spaces
- 8.4 Lone working
- 8.5 Slips and trips
- 8.6 Safe movement of people and vehicles
- 8.7 Work-related driving

Element 9: Work equipment

- 9.1 General requirements
- 9.2 Hand-held tools
- 9.3 Machinery hazards
- 9.4 Control measures for machinery

Element 10: Fire.

- 10.1 Fire principles
- 10.2 Preventing fire and fire spread
- 10.3 Fire alarms and fire-fighting
- 10.4 Fire evacuation

Element 11: Electricity.

- 11.1 Hazards and risks
- 11.2 Control measures

Assessment format

The NEBOSH General Certificate has two assessments: an open book exam and practical risk assessment. You must pass IG1 and IG2 to achieve your full qualification.

Open book exam IG – OBE

Unit IG1: Management of Health and Safety.

NEBOSH IG1 OBE - is an open book exam, which you type and submit online. You will be asked to carry out a series of tasks, which relate back to elements 1 to 4 , To download IG1 Guideline for Learners – from NEBOSH website

[Click Here](#)

Practical assessment - IG2

IG2 is a risk assessment. You will need to demonstrate your practical understanding of elements 5 to 11 and relate this back to the theory from previous elements. The risk assessment is split into 4 stages:

- Description of organization and methodology
- Risk assessment
- Actions and justifications
- Review, communicate and check

You must pass all four states to pass on the assessment ,to download IG2 Guideline for Learners – from NEBOSH website

[Click Here](#)

Pass rates – IG1 and IG2

You must pass both assessments to achieve your NEBOSH international General Certificate.



Examination dates

NEBOSH IG1 open book and IG2 exams are held throughout the year. You need to register before your chosen exam date at least 3 weeks before.

IG1 Learners will have 24 hours to access, complete and submit their paper starting from 11am (UK time) on the examination date.

NEBOSH has confirmed the standard dates for IG1 assessments, please visit NEBOSH website for further information by [click her](#)

Examination Results

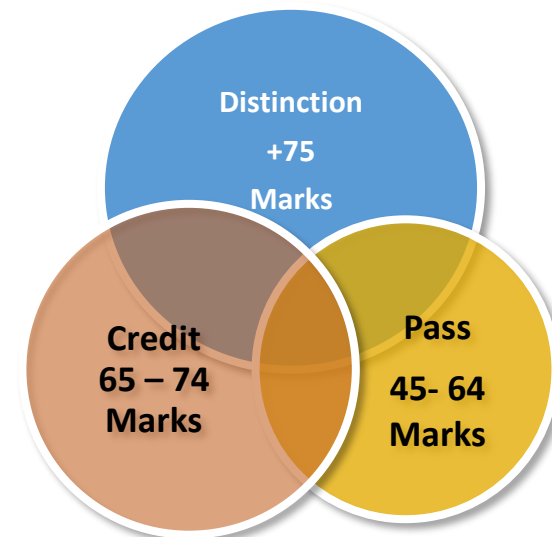
NEBOSH will email you your results within 10 weeks within 50 working days of the date of the assessment. Your hard copy certificate will be sent to you within 40 days of passing the exam, to obtain the certificate, it is necessary to pass both the IG1 and IG2 exams.

It will display your final qualification

grade: pass, credit or distinction.

Online Certificate Verifications For Further information Please visit NEBOSH website by [click here](#)

Qualification grading



Pre-Course Guidance & Advices



Are you uncertain about which NEBOSH IG course is most suitable for you?

Are you looking for a change of pace and eager to progress?

Perhaps you are seeking a globally recognized health and safety qualification. If you would like information on course costs, group discounts, or internal promotions, we are here to assist you.

Please feel free to provide us with any additional inquiries based on your specific needs, and we will gladly address them.

Mr. Shaker Abuzaid

- NEBOSH Course Advisor
- Cellphone : +249923699003 +96891915604
- Email : sh.abuzaid@charismawd.com
- www.charismawd.com

Miss.Esra Tilal

- Training Coordinator
- Cellphone : +249923699005
- Email : esra.tilal@charismawd.com
- www.charismawd.com

What can you expect from Charisma ?



You can expect accessible and up-to-date information from us. We provide continual advice and guidance.

Don't settle for ordinary when you can embrace extraordinary. Choose the NEBOSH IG Certificate with Charisma and embark on a transformative learning journey that will empower you to make a lasting impact in the world of occupational health and safety”



We make use of Zoom's interactive session tools, such as breakout group sessions, polls, Q&A, and quizzes. Additionally, we provide access to the CWD learning management system. Learners will have access to course recordings, course materials, activities, formative assessments, and tutors throughout the duration of the course and for an additional 10 days after its completion.

please visit our LMS for further information by [click her](#)



You have the opportunity to provide feedback on our services, including any complaints, compliments, or recommendations. This helps us continually improve our services and enhance the experience for our clients.



We offer a supportive, confidential, and impartial approach. To view our Policy's [click here.](#)

Pre-Course Guidance & Advices

Course Fees 2023 to 2024

- NEBOSH IG Course : 200 USD
- NEBOSH IG Exam : 250 USD

How to enroll

First step, we encourage you to reach out to us either by contacting us directly or sending an email. This will enable us to provide you with a comprehensive explanation of all the details pertaining to the General International Certificate.

Once you have a clear understanding of all the details and requirements, we will proceed to send you the registration form, the learner's agreement, as well as all the policies and regulations regarding course attendance and examination .

To complete the course registration forms with the required details, please ensure that you provide all the necessary information. Once we receive your payment, your course information (zoom link , LMS login details) will be dispatched to you within a maximum of 5 working days.

We are here to support you every step of the way throughout this journey.

Mr. Shaker Abuzaid

- NEBOSH Course Advisor
- Cellphone : +249923699003 +96891915604
- Email : sh.abuzaid@charismawd.com
- Website : www.charismawd.com

Miss.Esra Tilal

- Training Coordinator
- Cellphone : +249923699005
- Email : esra.tilal@charismawd.com
- Website: www.charismawd.com

Saad Ur Rehman

- Training Coordinator
- Cellphone : +92331 7600126
- Email: saad.ur.rehman@charismawd.com
- Website: www.charismawd.com

How NEBOSH IG course run

Physical classroom

- Training sessions adhere to an interactive and structured learning approach. The full-time course encompasses an intensive and concentrated 10-day training conducted over a span of 20 days , Training consists of lectures, videos, discussions, activities, assignments and sharing of professional experiences among candidates and tutors
- our NEBOSH approved tutors will be available throughout the course of study to provide support regarding course content and assist with assessment preparation.



Virtual training and CWD learning management system

For Virtual training/zoom classes we use zoom interactive session tools including breakout group sessions, polls, Q/A and quizzes.

Learners will have access to course recordings, course materials, activities, formative assessments, and tutors throughout the duration of the course and for an additional 10 days after its completion.

Charisma Revision and support

Mastering the art of exam preparation can be challenging, as it requires a thorough understanding of the necessary steps.

At CWD, we have developed a diverse set of revision tools designed to provide you with valuable insights. Our interactive revision workshops offer a unique platform to engage with tutors, discuss specific subjects, practice questions, receive feedback on your answers, and share last-minute tips with fellow learners.

By participating in these workshops, you can steer clear of common exam pitfalls and build the confidence needed for success. CWD workshops are an indispensable resource to bolster your confidence as you approach your exams.

Learning support & resources

At the onset of the course, all CWD learners are provided with an up-to-date hard copy of the NEBOSH course book. Additionally, learners will be granted access to the CWD Learning Management System and a dedicated WhatsApp group that includes tutors, learning support materials, and important NEBOSH information tailored for learners.

Other than the above provided information, any 3rd party information, and platforms (YouTube for videos, google for footage, ILO websites etc.) could be used to support the learning of the learners if required, i.e. C155 by ILO in element 1, H2S exposure accident from YouTube, parts of scaffolding while working at height, different types of work permit etc.

Induction Pack:

Upon registration with 1382- Charisma Workforce Development, learners are provided with an induction pack via email which includes the following:

CWD Induction Pack:

- CWD- NEBOSH IG Pre-Course Guidance
- NEBOSH Policy and procedures for suspected malpractice in examinations and assessments.
- How to Install & use Zoom
- Course material, RMS Book
- NEBOSH IG2 sample report
- NEBOSH Student Welcome Pack Brochure
- NEBOSH Open
- Book Examinations
- Learner Feedback Form
- CWD Complain Form
- NEBOSH refund policy
- Formative Assessment Procedure
- NEBOSH OBE sample paper
- IG2 Check List
- IG2 electronic Submission Form
- NEBOSH IG2 guidance v4
- About NEBOSH IGC
- IGC learner guide
- Contact details of Charisma
- OBE app guide
- NEBOSH enquiries about result policy
- OBE Learner Guide
- NEBOSH students' general terms and conditions
- Trainer Evaluation Form
- FAQs (Durations, deadlines, procédures etc.

[HOME](#) [ABOUT US](#) [CONTACT US](#) [SIGNUP](#) [LOGIN](#) [»](#)

Charisma Workforce Development

"Power up Your Training with Our LMS: Unlocking Success Through Seamless Learning!"



Re-Sitting

Learners have the option to re-sit IG1 and IG2 unit assessments in the following scenarios:

- If a learner obtained a "Pass" grade in a unit that is five or more years old and requires it to attain the qualification.
- If a learner receives a "Referred" grade (i.e., does not pass) in a unit.
- If a learner wishes to retake Unit IG1 to achieve a higher grade (Unit IG2 is either "Pass" or "Refer" and does not contribute to the qualification grade).

We are here to support you every step of the way throughout this journey.

Mr. Shaker Abuzaid

- NEBOSH Course Advisor
- Cellphone : +249923699003 +96891915604
- Email : sh.abuzaid@charismawd.com
- Website : www.charismawd.com

Miss.Esra Tilal

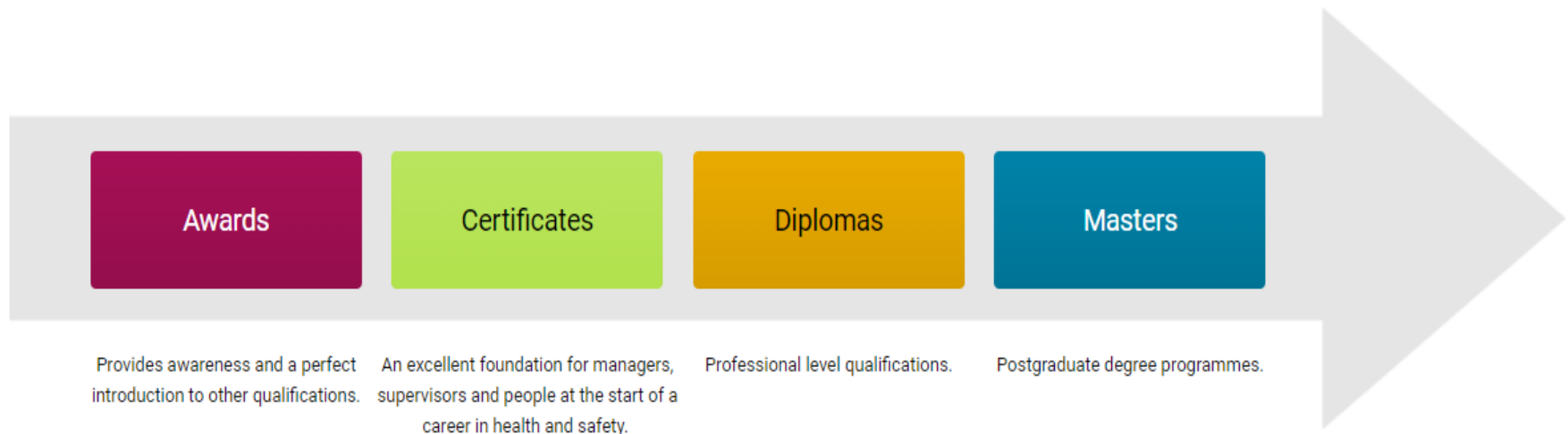
- Training Coordinator
- Cellphone : +249923699005
- Email : esra.tilal@charismawd.com
- Website: www.charismawd.com

Saad Ur Rehman

- Training Coordinator
- Cellphone : +92331 7600126
- Email: saad.ur.rehman@charismawd.com
- Website: www.charismawd.com

Build your knowledge with NEBOSH

Over 50,000 people take a NEBOSH qualification every year. Our health, safety and environmental qualifications are globally recognised and taken by people working in all types of industries, as well as national and local government organisations. Our network of accredited Learning Partners deliver NEBOSH courses and support learners throughout their studies and assessments, helping make NEBOSH qualifications accessible to people anywhere in the world.



For entry requirements for this qualification, For further information please kindly visit NEBOSH website by [click here](#)

NEBOSH Policies

During your journey with us to obtain the NEBOSH IG qualification, we have compiled a list of useful links that can assist you:

- **NEBOSH Official Website:** You can visit the official NEBOSH website for comprehensive information about the qualification, syllabus, resources, and updates, <https://www.nebosh.org.uk>
- **Study Groups and Forums:** Join our study groups or online forums where you can engage with fellow learners, share insights, ask questions, and receive guidance from experienced professionals
[Charisma Learning Management System](#)

Charisma Workforce Development Policies , please visit Charisma website by [click here](#)

NEBOSH Policies

NEBOSH Malpractice Policy

For further information, please visit NEBOSH website by [click here](#)

NEBOSH access arrangements & reasonable adjustments

For Further information Please visit NEBOSH website by [click here](#)

NEBOSH Refund policy and procedure

For Further information Please visit NEBOSH website by [click here](#)

NEBOSH Enquiries About Results (EARs)

For Further information Please visit NEBOSH website by [click here](#)

learner certificates including corrections and reissues

For Further information Please visit NEBOSH website by [click here](#)

Customer Feedback and Complaints

For Further information Please visit NEBOSH website by [click here](#)

Learner Terms and Conditions

For Further information Please visit NEBOSH website by [click here](#)

Special Considerations

For Further information Please visit NEBOSH website by [click here](#)

Appeals Policy

For Further information Please visit NEBOSH website by [click here](#)

For further information, please visit NEBOSH website by [click here](#)

NEBOSH contact

Contact Us

Our office is open 8am - 5pm (UK time) from Monday to Friday.

Postal Address:

NEBOSH
5 Dominus Way
Meridian Business Park
Leicester
LE19 1QW
UK

Live Chat

Our Live Chat is available Monday to Friday, 9am-5pm (UK time) and will load when a member of the Customer Enquiry Team is available to take your query. Our Live Chat will not load outside of these hours, and may be temporarily unavailable if all lines are busy.

Telephone

General enquiries: +44 (0)116 263 4700

Email and website

Website : <https://www.nebosh.org.uk/>

Email: info@nebosh.org.uk

Help us on improving

At anytime, anywhere we at CWD we are very welcome feedback & suggestions for continual improvement.

Mr. Shaker Abuzaid

- NEBOSH Course Advisor
- Cellphone : +249923699003 +96891915604
- Email : sh.abuzaid@charismawd.com
- Website : www.charismawd.com

Miss.Esra Tilal

- Training Coordinator
- Cellphone : +249923699005
- Email : esra.tilal@charismawd.com
- Website: www.charismawd.com

Saad Ur Rehman

- Training Coordinator
- Cellphone : +92331 7600126
- Email: saad.ur.rehman@charismawd.com
- Website: www.charismawd.com



Building No.61 Block No.50 Ebied Khatem Street Arkweet ,Khartoum
Sudan



www.charismawd.com



info@charismawd.com



+2499 923699005 - +249923699003 - +96891915604

Pakistan

+92 331 7600 126 | +92 335 7600 126

saad.ur.rehman@charismawd.com

Office No #308, 3rd floor, Talha Heights, 6th Rd, 21-D, Satellite Town,
Rawalpindi, pakistan

Your best partners in work and life





كاريزما لتنمية القوى العاملة
Charisma Workforce Development

Your best partners in work and life

THANK YOU

CONTACT US :



Building No.61 Block No.50 Ebied Khatem Street Arkweet
,Khartoum Sudan



www.charismawd.com



info@charismawd.com



+2499 923699005 - +249923699003 - +96891915604

Pakistan

+92 331 7600 126 | +92 335 7600 126

saad.ur.rehman@charismawd.com

Office No #308, 3rd floor, Talha Heights, 6th Rd, 21-D, Satellite Town,
Rawalpindi, Pakistan

Your best partners in work and life

